

Fixture Inventory

ETC Source 4 26Deg 575W  
Used: 57

ETC Source 4 36Deg 575W  
Used: 6

ETC Source 4 36Deg w/Gobo  
750W  
Used: 15

ETC Source 4 Series 2 LED  
19Deg 140W  
Used: 32

ETC Source 4 Series 2 LED  
26Deg 140W  
Used: 22

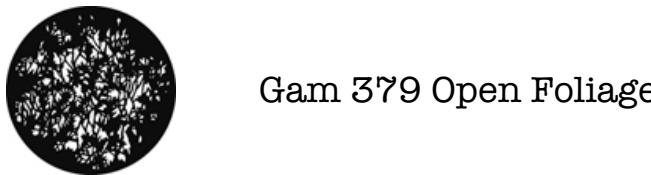
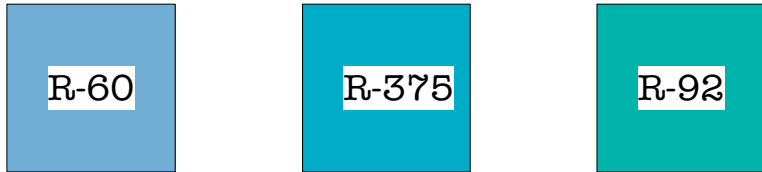
ETC Source 4 Series 2 LED  
36Deg 140W  
Used: 4

ETC Source 4 Series 2 LED  
50Deg w/Gobo 140W  
Used: 6

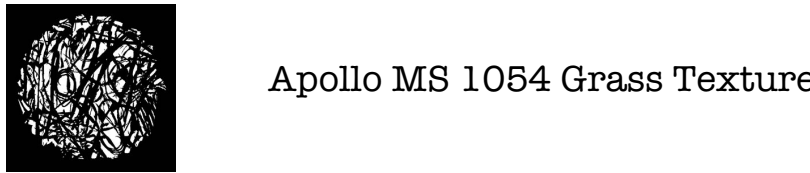
Clay Paky Mythos 470W  
Used: 12

Clay Paky A.leda B-EYE K20  
550W  
Used: 9

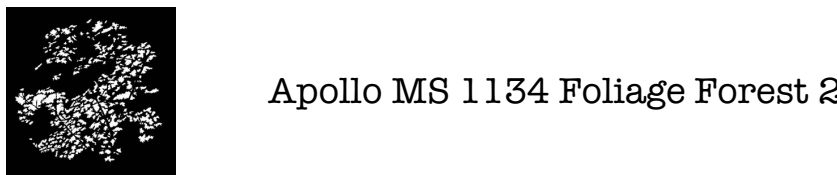
Pattern and Color



Gam 379 Open Foliage



Apollo MS 1054 Grass Texture

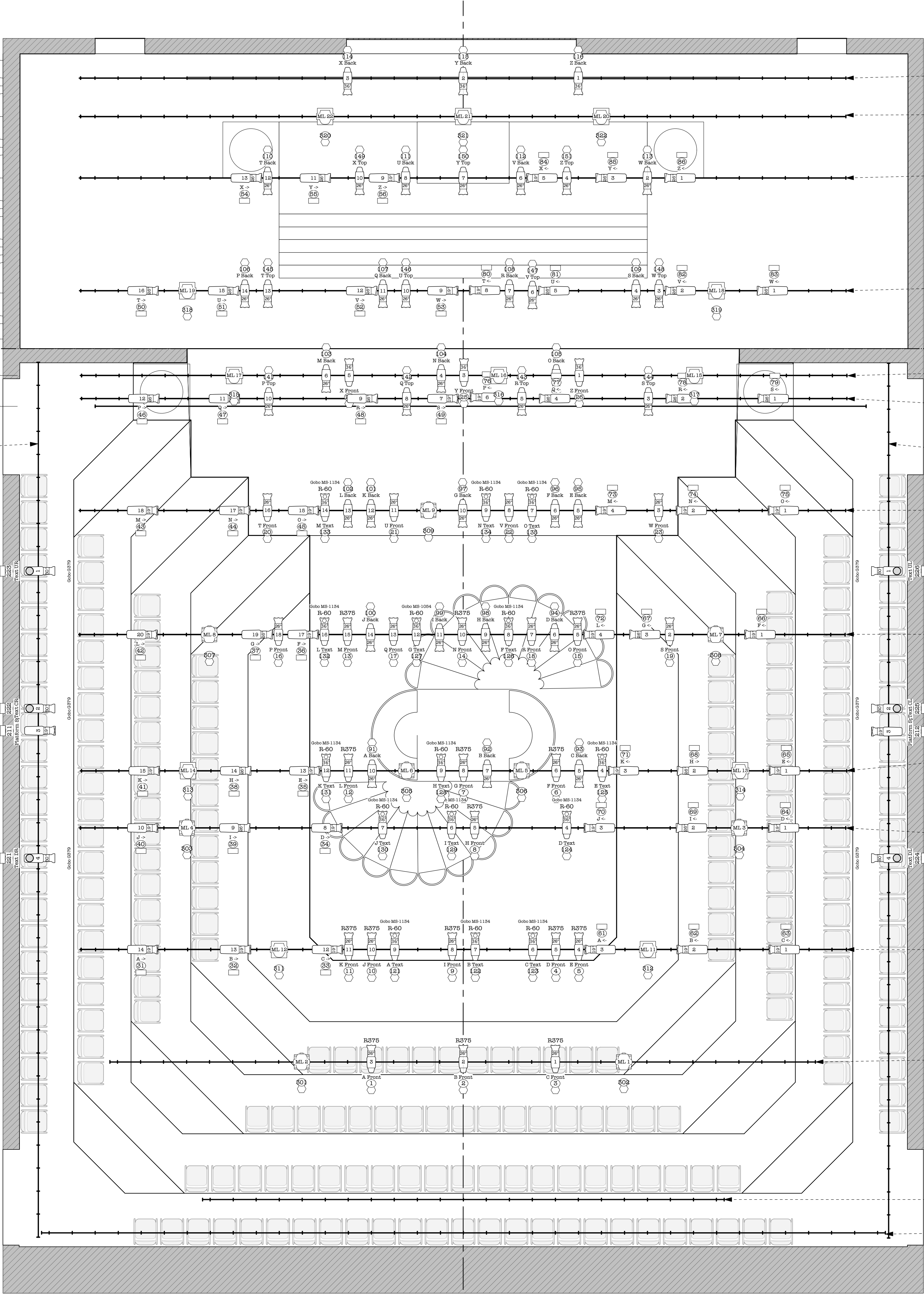


Apollo MS 1134 Foliage Forest 2

LINE	DESCRIPTION	IR	OUT
20	TRAVELLER	-	-
19	4TH ELECTRIC	-	-
18	OPEN	-	-
17	BORDER 4	-	-
16	3RD ELECTRIC	-	-
15	LEG 3	-	-
14	BORDER 3	-	-
13	OPEN	-	-
12	2ND ELECTRIC	-	-
11	LEG 2	-	-
10	BORDER 2	-	-
9	OPEN	-	-
8	OPEN	-	-
7	OPEN	-	-
6	OPEN	-	-
5	OPEN	-	-
4	1ST ELECTRIC	-	-
3	LEG 1	-	-
2	BORDER 1	-	-
1	EMPTY TRAVELLER TRACK	X	X

V2	ROW 8/8A	-
V1	HARD CUSTOM BORDER	27'-4"

SR Soffit  
1- ETC Source 4 LED 19Deg 140W  
3- ETC Source 4 LED 50Deg w/gobo 140W



4th Electric  
3- ETC Source 4 36Deg 575W

3rd Electric  
3- Clay Paky Mythos 470W

2nd Electric  
7- ETC Source 4 26Deg 575W  
2- ETC Source 4 LED 19Deg 140W  
4- ETC Source 4 LED 26Deg 140W

1st Electric  
8- ETC Source 4 26Deg 575W  
2- ETC Source 4 LED 19Deg 140W  
6- ETC Source 4 LED 26Deg 140W  
2- Clay Paky Mythos 470W

Row 8A  
3- ETC Source 4 26Deg 575W  
3- ETC Source 4 36Deg 575W  
3- Clay Paky Mythos 470W

Row 8B  
4- ETC Source 4 26Deg 575W  
2- ETC Source 4 LED 19Deg 140W  
6- ETC Source 4 LED 26Deg 140W

SL Soffit  
1- ETC Source 4 LED 19Deg 140W  
3- ETC Source 4 LED 50Deg w/gobo 140W

Row 7  
9- ETC Source 4 26Deg 575W  
3- ETC Source 4 36Deg w/gobo 750W  
6- ETC Source 4 LED 19Deg 140W  
6- Clay Paky A.leda B-EYE K20 550W

Row 6  
11- ETC Source 4 26Deg 575W  
3- ETC Source 4 36Deg w/gobo 750W  
4- ETC Source 4 LED 19Deg 140W  
2- ETC Source 4 LED 26Deg 140W  
2- Clay Paky A.leda B-EYE K20 550W

Row 5  
6- ETC Source 4 26Deg 575W  
3- ETC Source 4 36Deg w/gobo 750W  
4- ETC Source 4 LED 19Deg 140W  
2- ETC Source 4 LED 26Deg 140W  
2- Clay Paky Mythos 470W

Row 4  
1- ETC Source 4 26Deg 575W  
3- ETC Source 4 36Deg w/gobo 750W  
4- ETC Source 4 LED 19Deg 140W  
2- ETC Source 4 LED 26Deg 140W  
2- Clay Paky A.leda B-EYE K20 550W

Row 3  
5- ETC Source 4 26Deg 575W  
3- ETC Source 4 36Deg w/gobo 750W  
6- ETC Source 4 LED 19Deg 140W  
2- Clay Paky Mythos 470W

Row 2  
3- ETC Source 4 26Deg 575W  
2- Clay Paky A.leda B-EYE K20 550W

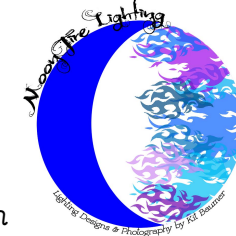
Row 1

DS Soffit

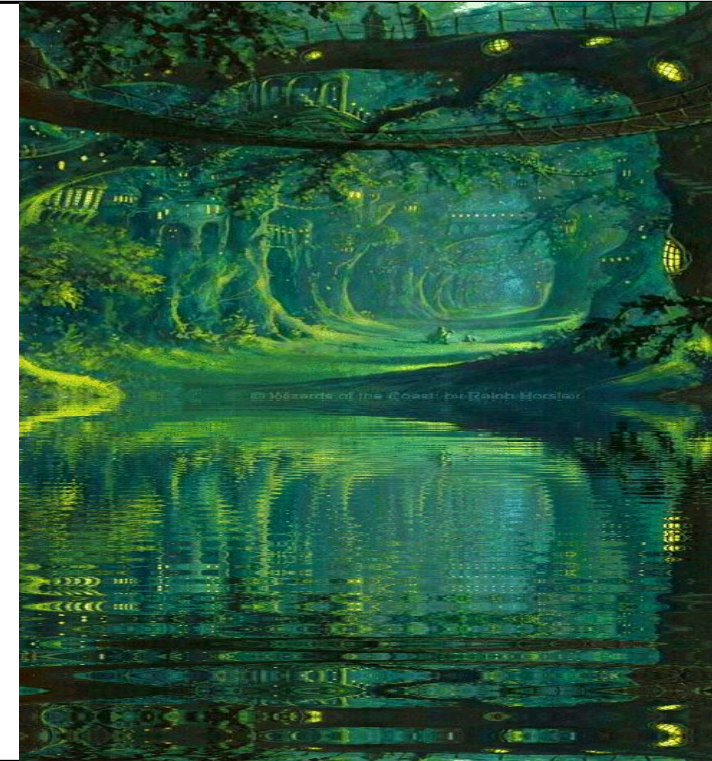
Lighting Design By:

Kit Baumer

(949) 235-0122 kitbaumer@icloud.com



A MIDSUMMER NIGHT'S DREAM



California Repatory

Studio Theatre

Long Beach, CA

MONTH X-X, YEAR

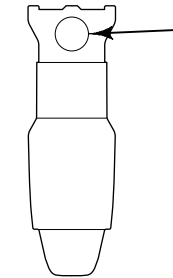
PRODUCTION TEAM

LD and SD: Kit Baumer

The Designer shall be responsible for visual/aural aspects of the production only. The Designer is not responsible for damages resulting through failure of contractors and electricians to carry out the execution of the designs and plans prepared by the Designer. It is further understood that the Designer is prepared to alter or permit the alteration of any specifications that may be found not compatible with proper safety precautions.

LABEL LEGEND

Color



Dimmer

DRAWING SCHEDULE

1. Light Plot
2. Deck Plot
3. Centerline Section

Light Plot

Date Drawn: ??-??-??  
Date Revised: ??-??-??  
Drawn By: INITIALS

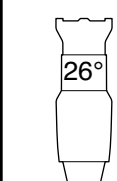
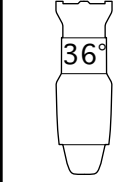
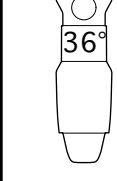
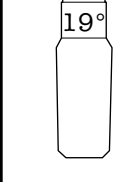
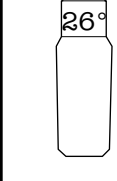
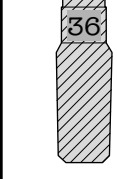
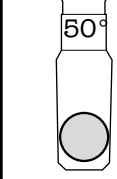
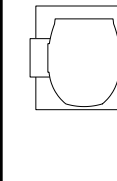
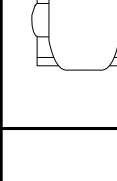
Scale: 1

??=??

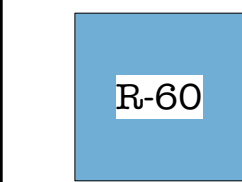

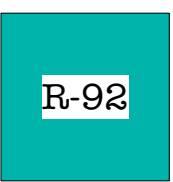



of



Fixture Inventory

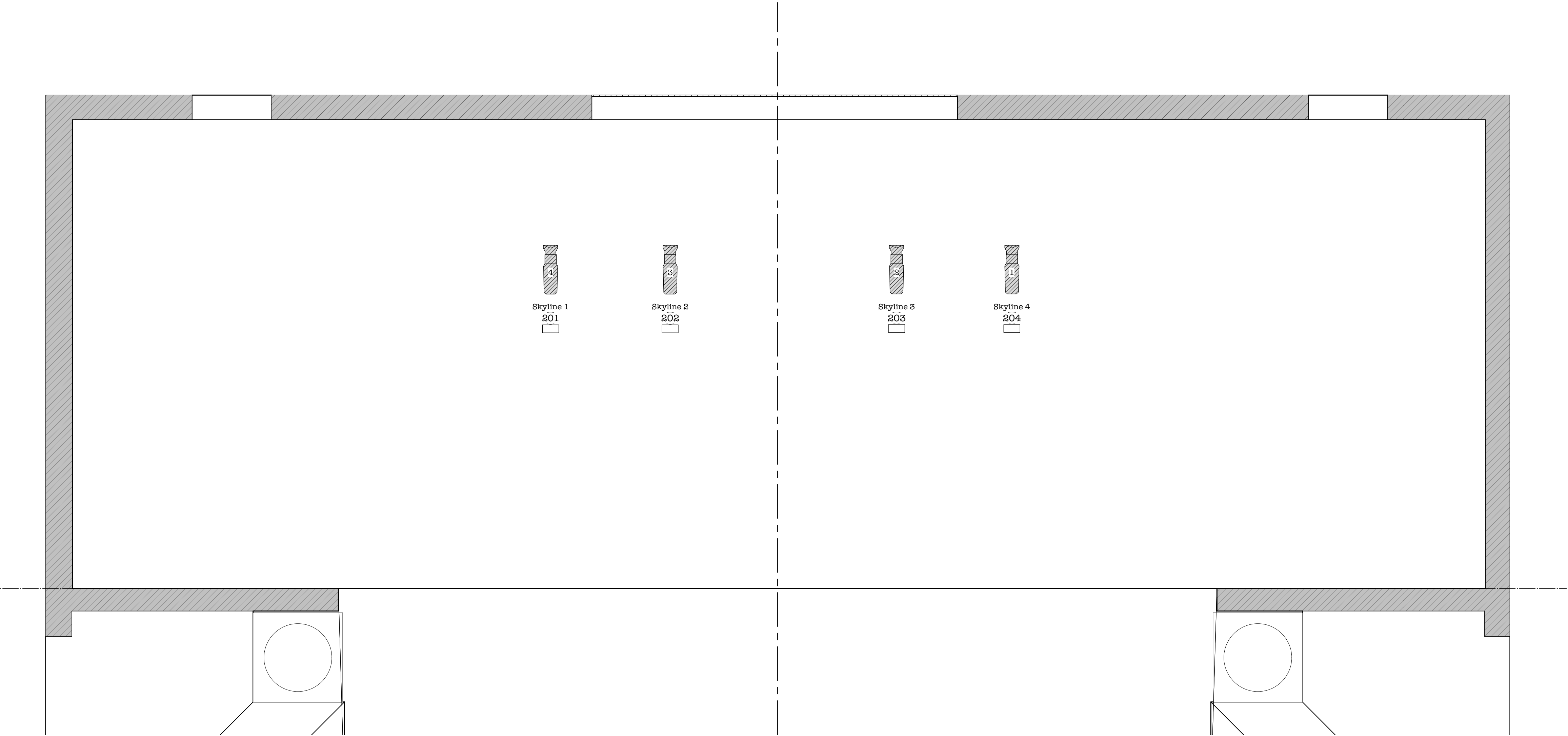
	ETC Source 4 26Deg 575W Used: 57
	ETC Source 4 36Deg 575W Used: 6
	ETC Source 4 36Deg w/Gobo 750W Used: 15
	ETC Source 4 Series 2 LED 19Deg 140W Used: 32
	ETC Source 4 Series 2 LED 26Deg 140W Used: 22
	ETC Source 4 Series 2 LED 36Deg 140W Used: 4
	ETC Source 4 Series 2 LED 50Deg w/Gobo 140W Used: 6
	Clay Paky Mythos 470W Used: 12
	Clay Paky A.leda B-EYE K20 550W Used: 9

Pattern and Color

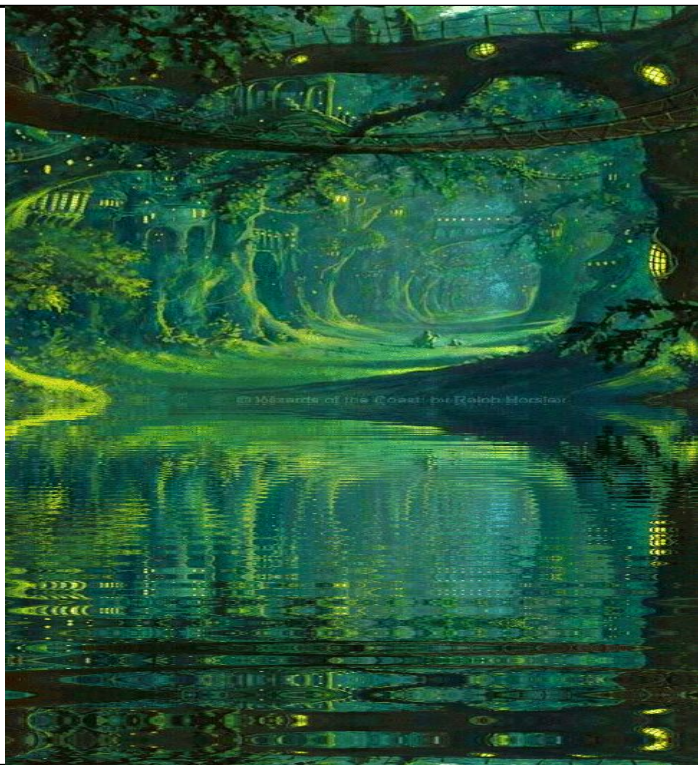
		
	Gam 379 Open Foliage	
	Apollo MS 1054 Grass Texture	
	Apollo MS 1134 Foliage Forest 2	

DESIGNER NOTES

- 1) No substitutions without prior approval of the Lighting Designer, Kit Baumer.
- 2) All fixtures are to be hung with steel aircraft cable safety chains.
- 3) All measurements are from the center of the lens.
- 4) All horizontal measurements are from Center Line.
- 5) All measurements on Boom Bases are taken from the Deck.
- 6) All measurements on Box Booms are taken from the bottom edge of the pocket
- 7) All fixtures are hung on 18" centers unless noted differently.
- 8) See the Instrument Schedule for additional gel and gobo information
- 9) All Source 4 conventional fixtures and Source 4 LED's with 36° barrels are to have R132 in addition to specified color.
- 10) All Electric trims are taken from the center of the batten.
- 11) All Border trims are taken from the bottom of the Border.



A MIDSUMMER NIGHT'S DREAM



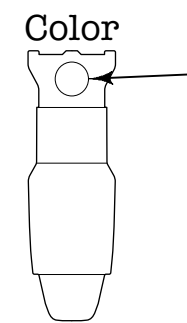
California Repatory  
Studio Theatre  
Long Beach, CA  
MONTH X-X, YEAR

PRODUCTION TEAM

LD and SD: Kit Baumer

The Designer shall be responsible for visual/aural aspects of the production only. The Designer is not responsible for damages resulting through failure of contractors and electricians to carry out the execution of the designs and plans prepared by the Designer. It is further understood that the Designer is prepared to alter or permit the alteration of any specifications that may be found not compatible with proper safety precautions.

LABEL LEGEND



Dimmer

DRAWING SCHEDULE

1. Light Plot
2. Deck Plot
3. Centerline Section

Deck Plot

Date Drawn: ??-??-??

Date Revised: ??-??-??

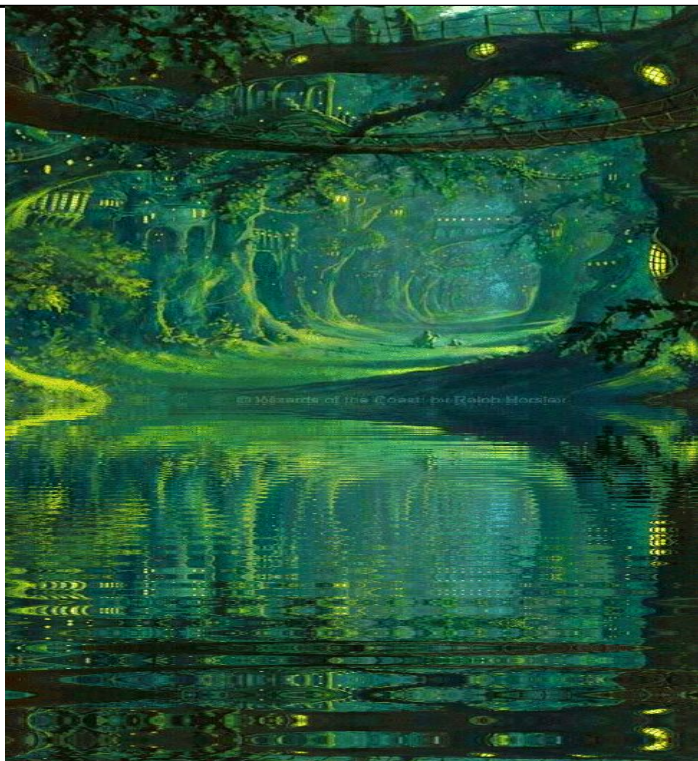
Drawn By: INITIALS

Scale: 2

??=?? of 3



A MIDSUMMER NIGHT'S DREAM



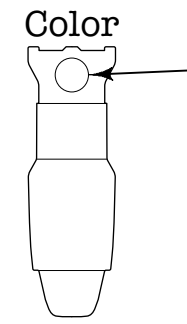
California Repertory  
Studio Theatre  
Long Beach, CA  
MONTH X-X, YEAR

PRODUCTION TEAM

LD and SD: Kit Baumer

The Designer shall be responsible for visual/aural aspects of the production only. The Designer is not responsible for damages resulting through failure of contractors and electricians to carry out the execution of the designs and plans prepared by the Designer. It is further understood that the Designer is prepared to alter or permit the alteration of any specifications that may be found not compatible with proper safety precautions.

LABEL LEGEND



Dimmer

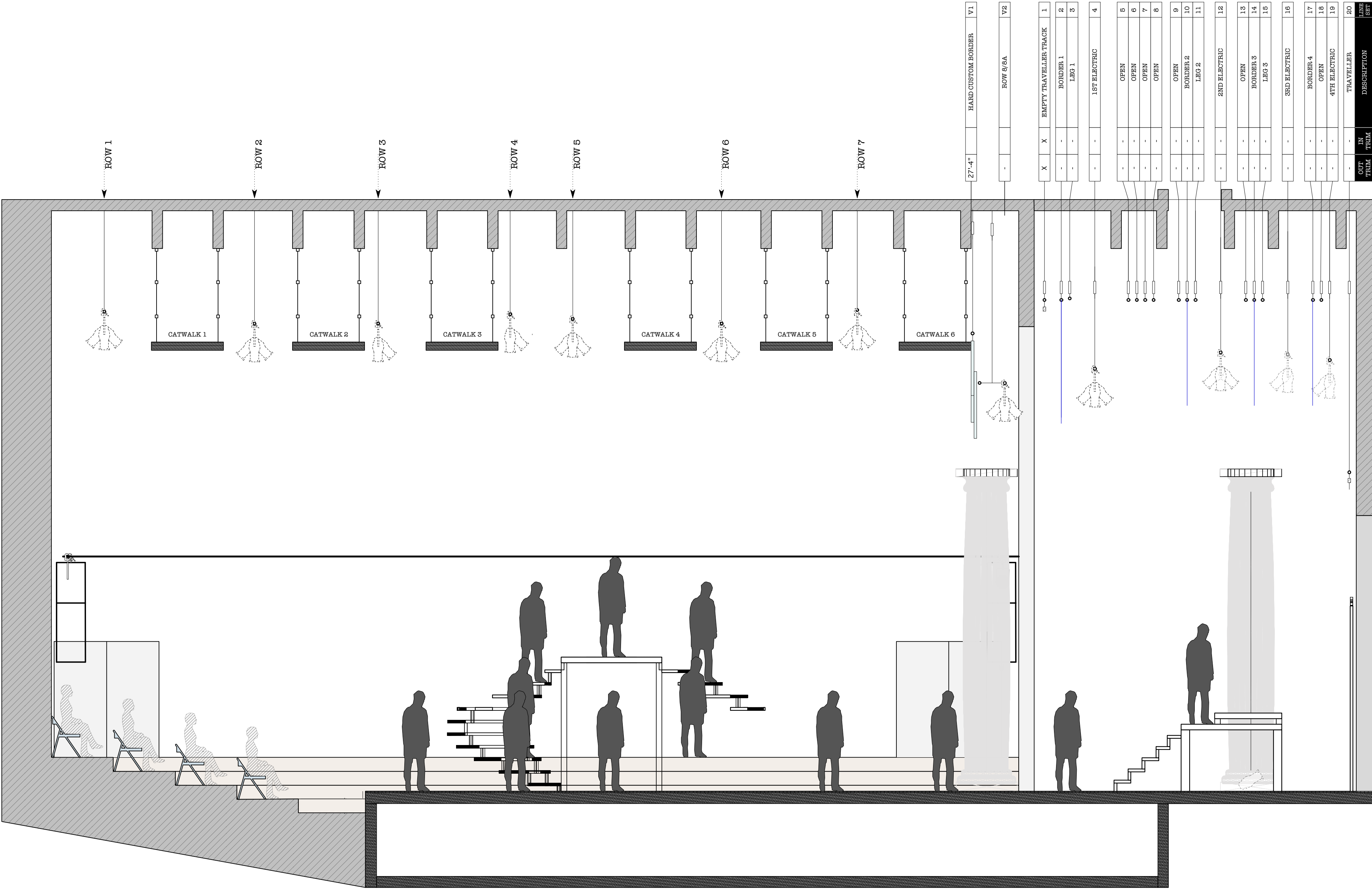
DRAWING SCHEDULE

- 1. Light Plot
- 2. Deck Plot
- 3. Centerline Section

Centerline Section

Date Drawn: ??-??-??  
Date Revised: ??-??-??  
Drawn By: INITIALS

Scale: 3 of 3



DESIGNER NOTES

- 1) No substitutions without prior approval of the Lighting Designer, Kit Baumer.
- 2) All fixtures are to be hung with steel aircraft cable safety chains.
- 3) All measurements are from the center of the lens.
- 4) All horizontal measurements are from Center Line.
- 5) All measurements on Boom Bases are taken from the Deck.
- 6) All measurements on Box Booms are taken from the bottom edge of the pocket
- 7) All fixtures are hung on 18" centers unless noted differently.
- 8) See the Instrument Schedule for additional gel and gobo information
- 9) All Source 4 conventional fixtures and Source 4 LED's with 36° barrels are to have R132 in addition to specified color.
- 10) All Electric trims are taken from the center of the batten.
- 11) All Border trims are taken from the bottom of the Border.